

INTU FR EJ SEAL

Fire rated expansion joint seal

TDS Technical Data Sheet



•INTUSEAL®
passive fire protection manufacturer

CE



www.intuseal.com

→ PRODUCT DESCRIPTION

The flexible gap filler **INTU FR EJ SEAL** is composed non-flammable foams of different thicknesses, with layers of graphite-based intumescent material. During fire, the material increases its volume and forms firestop foam filling the gap. The system is very flexible, making it ideal for gaps with a high degree of displacement.

- Fire resistance class up to EI 120
- Installation in walls and floors
- Easy installation without the use of special tools
- High flexibility
- Resistance to difficult weather conditions

→ APPLICATION

Fire retardant sealing of gaps and fire rated expansion joints in walls and floors with fire resistance class max EI 120 up to 100 mm gap width.

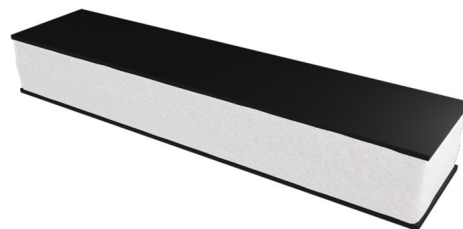
Rigid walls:	The wall must be minimum thickness 150 mm. Must have concrete, cellular concrete or masonry structure, with minimum density 600 kg/m³.
Rigid floor:	The floor must be minimum thickness 150 mm. Must have concrete, cellular concrete or masonry structure, with minimum density 1700kg/m³.

→ AVAILABILITY

Product	Type	Box	Article number
INTU FR EJ SEAL	10 mm / 1 m	100	INEJS10/120
	20 mm / 1m	80	INEJS20/120
	30 mm / 1m	80	INEJS30/120
	40 mm / 1m	60	INEJS40/120
	50 mm / 1m	50	INEJS50/120
	60 mm / 1m	40	INEJS60/120
	70 mm / 1m	40	INEJS70/120
	80 mm / 1m	30	INEJS80/120
	90 mm / 1m	25	INEJS90/120
	100 mm / 1m	25	INEJS100/120

→ INSTALLATION METHOD

1. The surface of the joint must be clean, dry and free of dust before installation.
2. Choose the right size of the filler depending on the width of the gap.
3. Compress the **INTU FR EJ SEAL** flexible filler and insert it into the gap so that the intumescent material adheres to the partition.
4. Fill the remaining gap with mineral wool with minimum density 50 kg/m³.
5. **INTU FR EJ SEAL** should be placed on either side of wall or floor, flush with the partition.



→ COMPLIANCE

- European Technical Assessment: **ETA 20/0330 of 26/05/2020**
- Declaration of Performance: **DoP 10/2019**
- Certificate of Constancy of Performance **1488-CPR-0865/W**

→ TRANSPORT AND STORAGE

It is recommended to store in dry internal conditions at temperatures between + 5°C and + 35°C.

INTU FR EJ SEAL

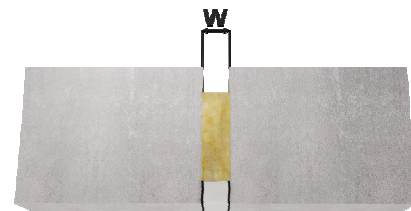
Fire rated expansion joint seal

TDS Technical Data Sheet

INTUSEAL®
passive fire protection manufacturer

➔ TECHNICAL DETAILS

Type of INTU FR EJ SEAL	Gap width „w”	Expansion movement up to 7,5%
		Nominal width x thickness of INTU FR EJ SEAL seal
INTU FR EJ SEAL 10 mm	do 10 mm	14 x 25 mm
INTU FR EJ SEAL 20 mm	od 11 do 20 mm	34 x 30 mm
INTU FR EJ SEAL 30 mm	od 21 do 30 mm	44 x 35 mm
INTU FR EJ SEAL 40 mm	od 31 do 40 mm	54 x 40 mm
INTU FR EJ SEAL 50 mm	od 41 do 50 mm	64 x 40 mm
INTU FR EJ SEAL 60 mm	od 51 do 60 mm	78 x 40 mm
INTU FR EJ SEAL 70 mm	od 61 do 70 mm	88 x 40 mm
INTU FR EJ SEAL 80 mm	od 71 do 80 mm	98 x 40 mm
INTU FR EJ SEAL 90 mm	od 81 do 90 mm	118 x 40 mm
INTU FR EJ SEAL 100 mm	od 90 do 100 mm	128 x 40 mm



Construction element	Horizontal	Vertical
WALL / FLOOR	EI120	EI120
	EI 120 -T-X-B-W10-50	EI 120 -V-X-B-W10-50

T	Linear joint seals: horizontal supporting structure
V	Linear joint seals: vertical supporting structure
X	Linear joint seals: expansion joint movement up to 7,5%
B	Linear joint seal type: made on construction site or prefabricated
W	Linear joint width



Fig. 1. Gap in wall



Fig. 2. Gap between wall and floor

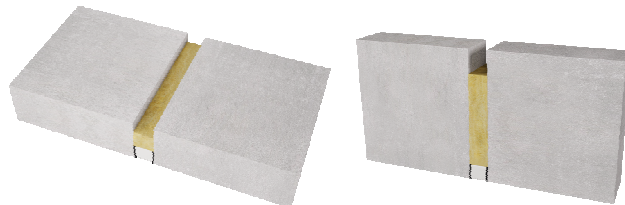
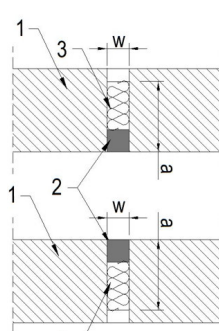
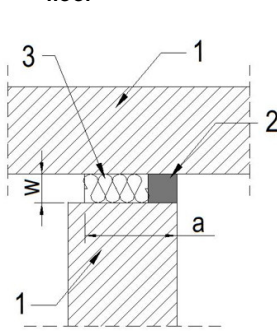
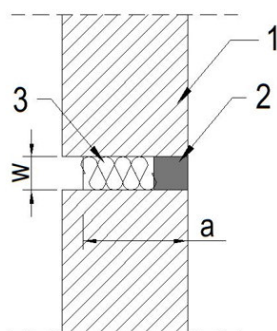


Fig. 3. Gap in floor / wall



- 1 – wall / floor with minimum thickness 150 mm
- 2 – expansion joint seal **INTU FR EJ SEAL** from any side of the partition
- 3 – mineral wool with minimum density 50 kg/m³
- a – minimum depth of: **INTU FR EJ SEAL** + mineral wool ≥ 150 mm
- w – width of gap